



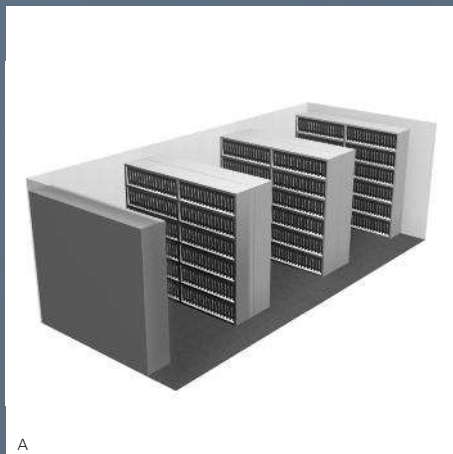
InnerSpace™

MOBILE STORAGE

January 2011

BISLEY

PRACTICAL MAGIC



A. Conventional static shelving
B. 100% increase of storage capacity
C. 50% decrease in space required



B

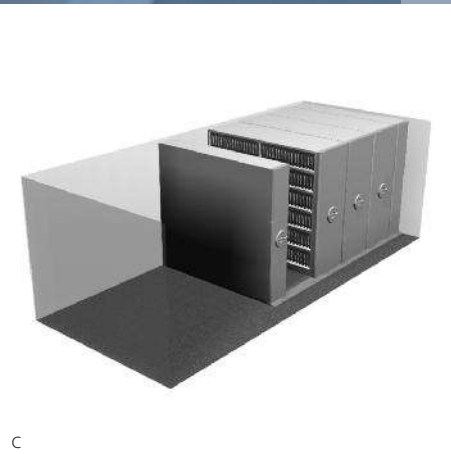


Why mobile storage?

Mobile storage is a practical solution for high-density filing and archiving, increasing storage capacity in an office by up to 100% and freeing up valuable floor space. File and content retrieval is quick and easy accommodating everything from roll-out filing frames to media drawers and reference shelves.

Mobile storage can:

- liberate space
- reduce storage costs
- reduce office running costs
- free up floor space



DESIGN EXCELLENCE



- A. Fold away handle
- B. Ergonomic handle design
- C. Radius edged front panels
- D. Ramp, track and safety bumper
- E. Fits flush into raised access flooring

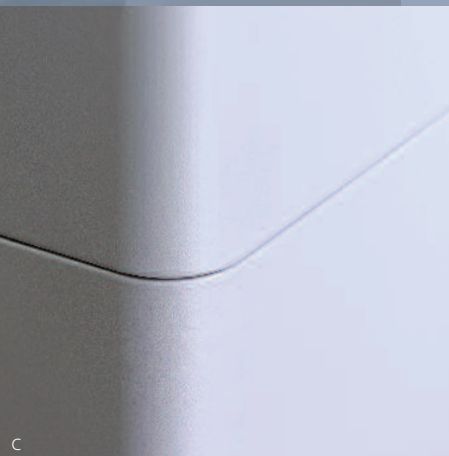


Why InnerSpace™?

Bisley InnerSpace™ is the only mobile system specifically developed for the 'front office', combining superior engineering with quality design. Unbroken lines, ergonomically-designed fold-away handles and a silent, belt-driven mechanism make InnerSpace™ a neutral and efficient choice of secure mobile storage for any office. It's also adaptable and therefore a future-proof/sustainable solution.

The benefits:

- smooth and quiet operation
- softened edges for a sleeker finish
- floating, height-adjustable floor with no fixings
- advanced track design for hassle-free operation
- built-in anti-tilt and brake button for safety
- maintenance-free belt drive mechanism



ULTIMATE CHOICE



A. Herbert Smith, International Law Firm

B. Allied Irish Bank

C. Chartered Institute of Environmental Health

D. Givaudan

E. Westbond carpets

What are the options?

InnerSpace™ is available in footprints to suit all types of office environments. Unit widths range from 600mm to 1200mm. Various heights are available and bays come in both single and double depths. It is possible to configure up to six units together at once without compromising on space or operation.

A built-in anti-tilt mechanism between track and the mobile unit negates the need for permanent fixings of any kind, either to the walls or floors. Most mobile storage is installed using permanent fixings but InnerSpace™ can be lifted up and rebuilt anywhere else in the office, making it the most adaptable solution.



FLOORLESS FIXING

- A. Rendered visual using the software CAD block
- B. Software generated specification with illustrated floorplan as standard
- C. Supplied drawing can be used in building plans



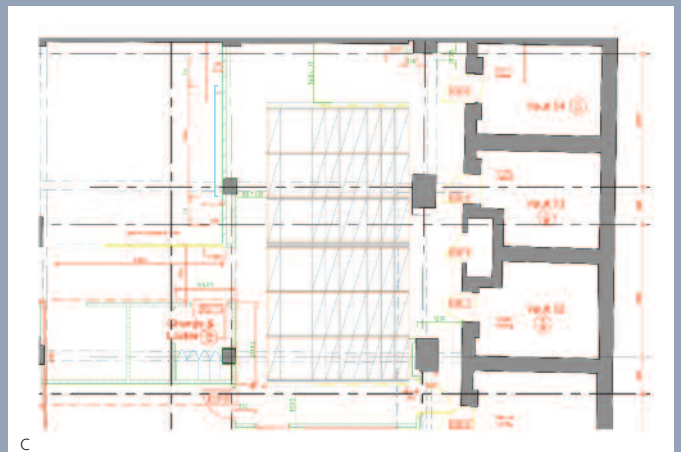
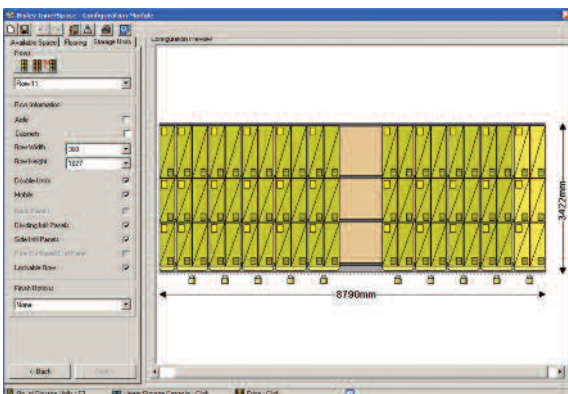
A

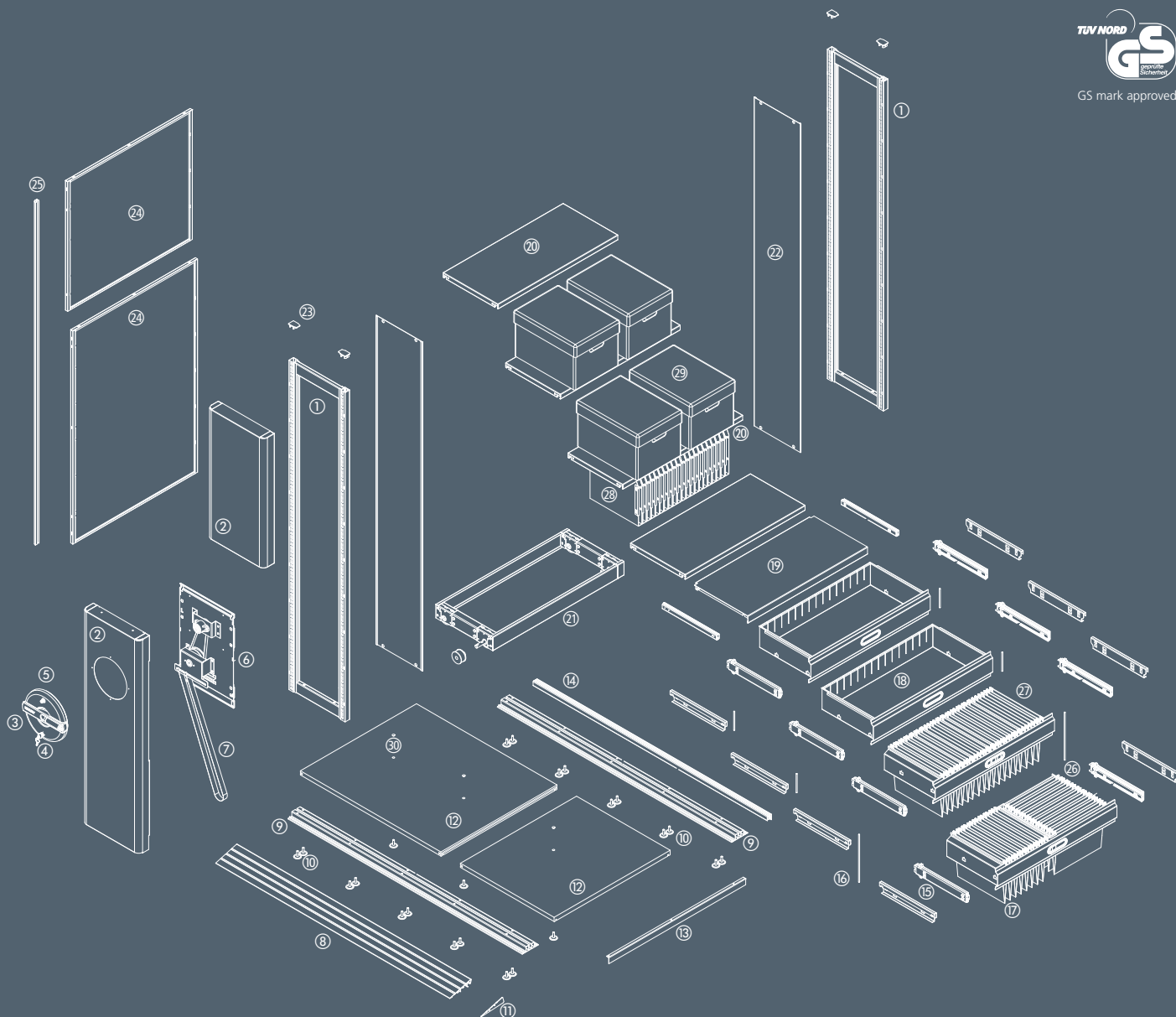
How is InnerSpace™ specified?

Bisley has designed special software that enables us to specify the InnerSpace™ unit that meets your exact storage needs. CAD drawings help to visualise how a system will fit into your office plan and will ensure that the right solution, based on your choice of media for storage and the available floor space, is fitted.

The package:

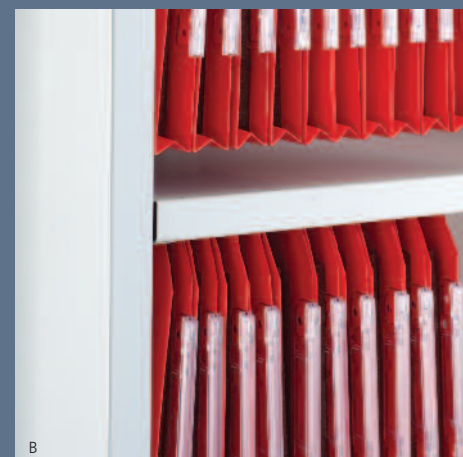
- site survey
- project management
- installation by trained teams
- bespoke service





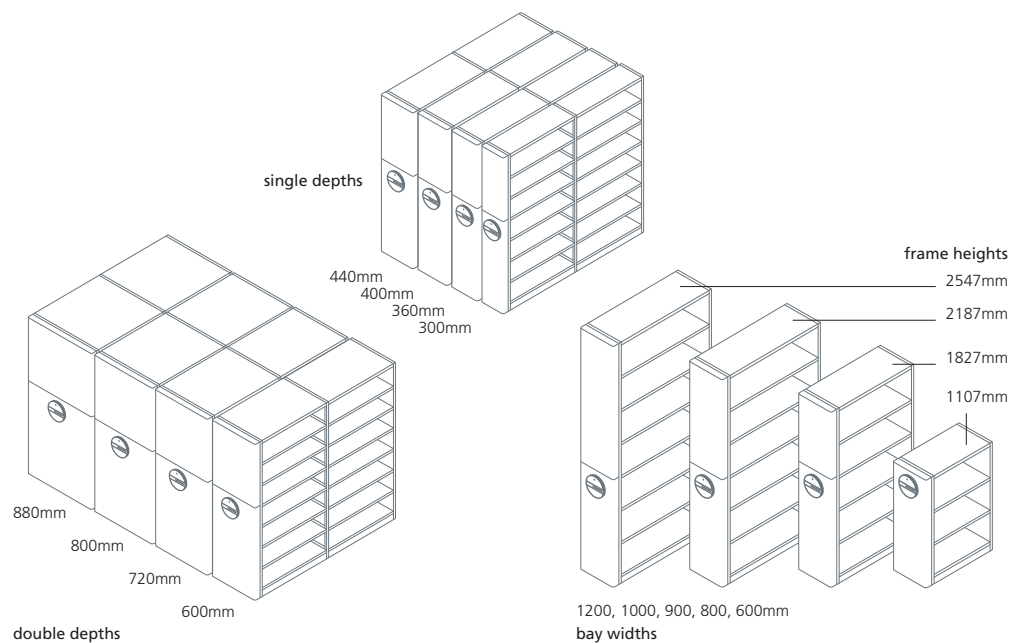
- | | | |
|--|--|--|
| 1. Frame | 11. Ramp end cap | 21. Skate with drive shaft |
| 2. End panel with rounded corners for a softer edge detail | 12. Floor panel in two colour options or chip board allowing carpeting | 22. Inside panel |
| 3. Drive handle, fold away and extendible for heavy loads | 13. Floor end plinth | 23. Frame end caps |
| 4. Lock, supplied with two keys | 14. Floor back plinth | 24. Back panel |
| 5. Break button for safety | 15. 100% opening slides for all roll-out fitments | 25. Corner infill strip |
| 6. Drive mechanism, quiet and virtually maintenance free | 16. Anti-tilt mechanism allows only one open roll-out at a time | 26. Front facing suspension filing pockets (A4 or Foolscap) |
| 7. Belt drive requires no lubrication for a cleaner system | 17. Roll-out filing frame for suspension filing (front or side facing) | 27. Side facing suspension filing pockets (A4 or Foolscap) |
| 8. Ramp out of aluminium | 18. 4" drawer for general and CD/DVD storage | 28. Lateral filing pockets |
| 9. Steel track for strength and stability under load | 19. Roll-out reference shelf | 29. Archiving boxes are accommodated at various depths |
| 10. Levellers to create a 100% level and stable floor | 20. Shelf with under shelf lateral filing | 30. Cap for leveller access hole – allows adjusting after installation |

- A. Drawers for general and digital media storage
- B. Horizontal media – lateral filing pockets
- C. Vertical media – box and lever arch filing
- D. Archive box storage
- E. Roll-out filing frames for suspension filing



The technical bit

A modular system, InnerSpace™ can cater for all types of media storage and filing solutions, making good use of available space and leaving no shelf or drawer unused. Existing Bisley storage such as the SystemFile™ and LateralFile™ units can be built into the design and, most importantly, its installation is pain free. The track/flooring can either sit on top of an existing floor or be integrated into raised access flooring allowing for a smooth transition between unit and surrounding floor levels.



Head Office, Sales & Production

F C Brown (Steel Equipment) Ltd
Bisley Office Furniture
Queens Road
Bisley, Surrey
GU24 9BJ
Tel: +44 (0)1483 485 600
Fax: +44 (0)1483 489 962
info@bisley.com

Showroom

Bisley Office Furniture
Northumberland House
155-157 Great Portland Street
London
W1W 6QP
Tel: +44 (0)20 7436 7111
Fax: +44 (0)20 7436 8111
info@bisley.com

Design & Production

Bisley Office Furniture
Caswell Way
Reevesland Ind Est
Newport, South Wales
NP19 4PW
Tel: +44 (0)1633 637 383
Fax: +44 (0)1633 637 384
info@bisley.com

Bisley France

6 bis, rue Georges Chapellier
78150 Le Chesnay
France

Tel: +33 (0)13 9 54 39 58
Fax: +33 (0)13 9 43 93 69
info@bisley.fr

Bisley GmbH

Wiesenstrasse 70 A3
40549 Düsseldorf
Germany

Tel: +49 (0)211 87 541 600
Fax: +49 (0)211 87 541 899
info@bisley.de

Bisley B.V.

Vollerstraat 2
5051 JV GOIRLE
Holland

Tel: +31 (0)13 463 06 62
Fax: +31 (0)13 463 96 15
info@bisley.nl

Bisley Ireland

36 Beechwood Close
Bray, Co. Wicklow
Ireland

Tel: +353 (0)1 276 9100
Fax: +353 (0)1 276 9101
info@bisley.ie

Bisley Spain

Pol. Ind. Bakiola Pab. 6
48498 Arrankudiaga (Vizcaya)
Spain

Tel: +34 94 633 32 00
Fax: +34 94 633 32 33
info@bisley.es

www.bisley.com

