

ACCESSORIES & POWER /CABLE MANAGEMENT

ORGANISE, DECORATE, BRIGHTEN UP...

Accessories are indispensable: create unique spaces adapted to users' everyday needs and usages. Functional, decorative or illuminating, accessories are designed to make employees' day-to-day lives easier. They facilitate the organising and optimising of an individual or collective work space (flatscreen monitor arm, coat stand...), illuminating it by introducing adaptive lighting, or simply beautifying it. Far from being mere gimmicks, these are indispensable elements that will contribute greatly to the overall well-being of employees.

Accessoires

Multimedia stands	254
Flatscreen monitor arms	256
Decorative plants	260
Desk lamps	261
Decorative lamps	264
Desktop accessories	266
Hat and coat stands	268
Meeting accessories	270
Signage & whiteboards	271

KEYBOARD SHELVES

**Economy**

Made from ABS in a Graphite grey finish.
Attaches to underside of the worktop.
Pull-out mouse shelf for left or right-handed users.

**Adjustable**

Made from black folded sheet steel
Attaches to underside of the worktop.
Height-adjustable from 6 to 10 cm.
Adjustable in depth by 5 cm.

CPU HOLDERS

**Worktop mounted**

Steel supporting arm.
Attaches to the underside of the worktop using wood screws (supplied).
Max. load 30 kg - Aluminium grey finish

**Worktop mounted**

Secured in position using adjustable straps.
Attaches to the underside of the worktop using wood screws.
Max. load 30 kg - Aluminium grey finish

**Mobile**

Mounted on 4 castors (2 are lockable)
Adjustable in width, between 8 and 25 cm.
Max. load 40 kg - Aluminium grey finish

COMPUTER WORKSTATIONS & TABLES

**Multi-purpose mobile table**

Melamine worktop 25 mm thick.
Metal structure in an Aluminium grey finish.

**Height-adjustable mobile table**

Melamine worktop 19 mm thick.
Metal structure in an Aluminium epoxy finish.
Height-adjustable, between 69 and 110 cm.
Max. load: 40 kg.

**COMPUTER WORKSTATION**

Melamine worktop 19 mm thick.
Aluminium structure.
Mounted on 4 castors (2 are lockable)
Max. load: 30 kg.



PRICES

Price excl. taxes: **From stock** **On request**

KEYBOARD SHELVES

Economy

Overall width: 57 cm.
Usable dimensions: W. 49 x D. 22 cm.

Ref. + top + col.

6 505 002 + PY

Adjustable

Usable dimensions: W. 74 x D. 34 cm.

6 505 003 + SG

CPU HOLDERS

Worktop mounted - steel supporting arm

Adjustable in width from 7 to 23 cm, and in height from 31 to 55.5 cm.
Overall dimensions: W. 22 x D. 14 x H. 31/55.5 cm.

6 443 028 + SB

Worktop mounted - secured using straps

Overall dimensions: W. 27 x D. 15 x H. 40 cm.

6 443 034 + SA

Mounted on castors - mobile

Overall dimensions: W. 17/34 x D. 24 x H. 20 cm.

6 443 026 + SB

COMPUTER WORKSTATIONS & TABLES

Multi-purpose mobile table - Snow white decorative finish

Overall dimensions: W. 50 x D. 40 x H. 64 cm.
Lower shelf: W. 40 x D. 30 cm.
Clearance between shelves: 39.5 cm.

6 499 009 + MG + SA

Height-adjustable mobile table - Beech decorative finish

Dimensions: W. 50 x D. 40 cm.
PVC edge banding

6 499 015 + MX + SB

Computer workstation - Beech decorative finish

Keyboard shelf and height-adjustable telescopic shelves.
Integrated CPU holder on left or right-hand side, adjustable between 0 and 25 cm.
Overall dimensions: (CPU position in folded position): W. 90 x D. 50 x H. 81 cm.

6 497 038 + MX + SB

FINISHES

Multi-purpose mobile table



MG
Snow white

Height-adjustable table



MX SB
Beech / Aluminium

Computer workstation



MX SB
Beech / Aluminium

FROM STOCK

WORKTOP MOUNTED FLATSCREEN MONITOR ARM

+ Ergonomic & dynamic

Features multiple points of articulation and possible positions, allowing easy adjustments at will

Considerably improves ergonomics and de-clutters the workspace



Solid and durable materials and design

Positioning the screen correctly alleviates and prevents neck pains and eye fatigue

All our flatscreen monitor arms comply with the VESA 75 or 100 mm standards

PRICES

Price excl. taxes:

From stock

On request

WORKTOP MOUNTED FLATSCREEN MONITOR ARMS

Ref.

Standard

Flatscreen monitor arm with 4 articulations and clamp

Attaches to the worktop using a clamp or by slotting into a cable port opening Ø 80 mm. Clamp for worktop 6 to 42 mm thick. Arm dimensions: H. 46 x W. 41.3 cm. Max. load: 8 kg. Aluminium grey finish.



For 1 screen

6 445 020 + SB

For 2 screens

6 445 018 + SB

Technical

Flatscreen monitor arm with 4 articulations. Spring-loaded mechanism. Compatible with 95% of flatscreen monitors available on the market (max. load: 9 kg). Integrated cable holder. White and polished aluminium finish.



Flatscreen monitor arm - for 1 screen

Clamps to worktop

6 445 037 + ZF

Slots into cable port

6 445 045 + ZF

Bolt-through fixing / drilled worktop

6 445 040 + ZF

Technical +

Flatscreen monitor arm with 4 articulations. Piston-based mechanism. Compatible with 95% of flatscreen monitors available on the market (max. load: for 1 screen: 18 kg, for 2 screens: 9 kg each). Integrated cable holder. White and polished aluminium finish.



Flatscreen monitor arm - for 1 screen

Clamps to worktop

6 445 041 + ZF

Flatscreen monitor arm - for 2 screens

Each screen can be adjusted or re-positioned individually. Compatible with flatscreen monitors weighing up to 18 kg, or twin screens weighing up to 9 kg each. White and polished aluminium finish.

Clamps to worktop

6 445 038 + ZF

Clamp mounted with ergonomic handle

6 445 047 + ZF

RAIL MOUNTED FLATSCREEN MONITOR ARMS

+ Ergonomy & well-being

Positioning the screen correctly
alleviates and prevents neck
pains and eye fatigue

Designed for mounting
on LUCIEN desktop screens
and/or accessory rails

Optimises and de-clutters
the workspace



All our flatscreen monitor arms comply
with the VESA 75 or 100 mm standards

- LUCIEN desktop screens, page 112
- Accessory rails, page 118

PRICES

Price excl. taxes: **From stock** **On request**

WORKTOP MOUNTED FLATSCREEN MONITOR ARMS

Ref.

Economy - Attach to 2nd level accessory rails (see p. 118) and to acoustic desktop screens (see p. 112). Aluminium finish.



Flatscreen monitor arm for 1 screen - max.load: 8 kg, W. 13 cm - 2 articulations.

6 445 003 + SB



Flatscreen monitor arm for 1 screen - max.load: 6 kg, W. 24.5 cm - 3 articulations.

6 445 004 + SB

Design - Attach to 2nd level accessory rails (see p. 118). Aluminium finish.



Flatscreen monitor arm for 1 screen - max. load: 12 kg, W. 14 cm - 2 articulations.

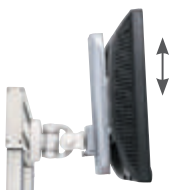
6 445 028 + SB



Flatscreen monitor arm for 1 screen - max. load: 10 kg, W. 34 cm - 3 articulations.

6 445 029 + SB

Options - Affix to the rails of Economy and Design desktop screens. Allows adjustments to the monitor height through 16.5 cm. Max. load: 6 kg. Aluminium finish.



Vertical slider for flatscreen monitor arm.

6 445 030 + SB



Delightful & soothing

Natural wood and artificial foliage

Includes

- pot
- plant
- gravel



Grey gravel



Round pots in a glossy lacquered finish

Square pots in a matt finish

$$5 \text{ plant varieties} \times 3 \text{ choices of pots} \times 3 \text{ choices of pot colour} = 45 \text{ different combinations to choose from}$$



WILD GRASSES

H. 90 cm

- Round pots H. 90 cm 7 532 015 + col.
- Round pots H. 70 cm 7 532 014 + col.
- Square pots H. 44 cm 7 532 013 + col.



ORIENTAL BAMBOO

H. 110 cm

- 7 532 012 + col.
- 7 532 011 + col.
- 7 532 010 + col.



ALOE VERA

H. 35 cm

- 7 532 003 + col.
- 7 532 002 + col.
- 7 532 001 + col.



CYCAS PALM

H. 55 cm

- 7 532 006 + col.
- 7 532 005 + col.
- 7 532 004 + col.



BONSAI FICUS

H. 90 cm

- 7 532 009 + col.
- 7 532 008 + col.
- 7 532 007 + col.

FINISHES

3 lacquered finish round pot colours (+ col.)



O7
White



O5
Taupe



O8
Black

3 matt finish square pot colours (+ col.)



OG
White



O6
Taupe



OK
Graphite grey

ON REQUEST

ON REQUEST: allow 3 to 4 weeks



Indispensable & effective



* Depending on the model

LED lights, a source of savings

- An average operating lifetime of 30,000 hours, equivalent to over 10 years usage
- Energy consumption 5 to 10 times less than for traditional light-bulbs
- 7 watts led = 60 watts incandescent equivalent output

PRICES

Price excl. taxes: **From stock** **On request**

DESKTOP LAMPS



OL 01 - H. 40.5 cm

LED 730 lumens. Integrated USB smartphone charging port.
5 adjustable light colour temperature settings.
Dimmer switch. 3 points articulation.
Touch-sensitive light switch on base.

7 094 002 + fin.



OL 02 - H. 45 cm

LED 450 lumens. Features a wireless induction charger for the latest generation smartphones.
5 luminous intensity settings. 3 light colour temperature settings. Anti-glare filter. Programmable settings memory Auto-off setting. Built-in light sensor. Nightlight function. USB port. Touch-sensitive light switch on base.

7 076 002 + fin.



OL 03 - H. 34 cm

LED 800 lumens. 3 points articulation.
Dimmer switch.
Auto-off setting.
3 attachment methods

- > weighted base
- > desk rail attachment
- > clamp

7 054 005 + fin.

7 054 009 + fin.

7 054 007 + fin.



OL 04 - H. 47 cm

LED 1,000 lumens. Integrated USB port and magnetic smartphone cradle.
4 light colour temperature settings. Dimmer switch.
Anti-glare filter.
4 points articulation.

7 633 004 + fin.



FINISHES

OL01



OG
White



OF
Black

OL02



OGOL
White/silver



OGON
White/gold

OL03 / OL04



OG
White



OF
Black

FROM STOCK

ON REQUEST

"Refer to specific pricing guide - special discounts"

ON REQUEST: allow 3 to 4 weeks

OFFICE FLOOR LAMP

Ref.



FL 01 - H. 145 cm
LED lumens: 2 x 500. Reading lamp with 2 adjustable light reflectors that can rotate and adapt to a user's position. Light switch on cord.

7 077 002 + fin

FL 02 - H. 180 cm
LED lumens: 2,350. Produces diffuse indirect lighting of variable intensity. Dimmer switch. Glass reflector in a translucent satin finish. Switch located on stem.

7 093 002 + SG



FL 03 - H. 192 cm
FLUO lumens: 19,200. 4 low energy fluorescent light sources producing a natural lighting effect. Direct and indirect lighting. Polycarbonate reflector in a translucent satin finish. Switch with 4 brightness settings located on reflector.

7 469 001 + ZA

FL 04 - H. 195 cm
LED lumens: 5,400. Anti-glare filter. Direct and indirect lighting. Dimmer switch. Free-standing base.

7 095 004 + SO



FL 05 - H. 195 cm
LED lumens: 3,000. U-shaped base designed to fit around a desk leg, compact design ideal for saving space. Direct lighting (30%) and indirect lighting (70%). Switch located on stem. Neutral white light.

7 088 002 + SA

FL 06 - H. 186 cm
LED lumens: 3,600. Auto-on/off function activated by an integrated occupancy sensor. PMMA diffuser (polycarbonate protector). Energy consumption optimisation. Switch located on stem.

7 276 007 + SO

FINISHES						
FL01	FL02	FL03	FL04	FL05	FL06	
SO White	SG Black	SG Black	ZA Aluminium	SO White	SA Aluminium	SO White
FROM STOCK						

"Refer to specific pricing guide - special discounts"

PRICES

Price excl. taxes: **From stock** **On request**

DECORATIVE & READING LAMPS



CL 01

CL 02

CL 01 - H. 139 cm

Lumens: 350. LED E14 bulb - 3.5 watts equivalent.
Metal structure in matt finish with rubberised aspect. Adjustable head.
SG, SU or SO colour finish.

7 202 008 + fin.

CL 02 - H. 150 cm

Lumens: 650. LED E27 bulb - 6 watts equivalent.
Structure in combination of wood and metal. SG or SO colour finish.

7 203 004 + MB + fin.



CL 03

CL 04

CL 03 - H. 195 cm

Lumens: 650. LED E27 bulb - 6 watts equivalent.
Height-adjustable stem. White cotton or linen lamp shade.
Choice of colours: EX, EP, ER, EQ, ET, ES, EO or EZ.

7 206 006 + SY + tis.

CL 04 - H. 167,5 cm

Lumens: 650. LED E27 bulb - 6 watts equivalent.
Metal structure with shelf in a white finish. White cotton or linen lamp shade.
Choice of colours: EX, EP, ER, EQ, ET, ES, EO or EZ.

7 205 006 + SO + tis.



CL 05

CL 05 - H. 142 cm

Lumens: 2,100. Compact FLUO bulb E27 - 32 watts equivalent.
Natural wood finish tripod base. Cylindrical wood effect laminated lampshade.
Switch located on lamp socket.

7 018 003 + MB

"Refer to specific pricing guide - special discounts"

DECORATIVE DESK LAMPS



DL 01 - H. 27.8 CM

LED E14 bulb - 3.5 watts equivalent. Lumens: 350.
Ultra-compact. Metal structure in matt finish with rubberised aspect.
SG or SO colour finish.

7 200 004 + fin.



DL 02 - H. 52 cm

LED E14 bulb - 3.5 watts equivalent. Lumens: 450.
Metal structure in matt finish with rubberised aspect. Adjustable head.
SG, SU or SO colour finish.

7 202 006 + fin.



DL 03 - H. 54.5 cm

LED E14 bulb - 3.5 watts equivalent. Lumens: 450.
Metal frame mounted on brushed concrete base. Adjustable head.
SG or SO colour finish.

7 201 004 + fin.



DL 04 - H. 42.6 cm

LED E14 bulb - 3.5 watts equivalent. Lumens: 450.
Brushed stainless steel frame with cotton or linen lamp shade.
Choice of colours: EX, EP, ER, EQ, ET, ES, EO or EZ.

7 204 006 + SY + tis.



DL 05 - H. 59 cm

FLUO bulb E27 - 12 watts equivalent. Lumens: 715.
Natural wood finish tripod base. Light switch on cord.
Cylindrical wood effect laminated lampshade.

7 018 002 + MB



Other models available on request: contact us

"Refer to specific pricing guide - special discounts"

FINISHES

CL03 / CL04 / DL04

4 choices of metal finish (+ fin.)

8 choices of cotton and linen colour (+ fab.)



SO
White



SG
Black



SU
Grey



SY
Brushed stain-
less steel



EX
White



EP
Light grey



ER
Dark grey



EQ
Taupe



ET
Purple



ES
Red



EO
Light flaxseed
brown



EZ
Dark flaxseed
brown

STOCK

PRICES

Price excl. taxes: **From stock** **On request**

AXIANE

Made from steel coated in a matt epoxy resin. Stackable letter trays equipped with protective non-slip pads. Cylindrical waste bin with integrated handles. Desk mat 1.5 mm thick in a black finish, non-reflective polyvinyl surface, non-slip felt underside.



	Ref.
Stackable letter trays - W. 25.5 x D. 35.5 x H. 8 cm	7 626 010 + fin
Pencil cup - W. 8 x D. 6.5 x H. 13.2 cm	7 626 007 + fin
Desk mat - W. 65 x D. 50 cm	7 524 002 + OF
Cylindrical waste bin - 16 litres - H. 35 x Ø 26 cm	7 626 004 + fin

SIMPLI

Acrylic and ABS desktop accessories. Stackable letter trays – vertically or offset. In a white finish. Desk mat in black simulated leather with white edging and top-stitching.



Stackable letter trays - W. 26.8 x D. 33.3 x H. 5 cm	7 540 002 + OD
Pencil cup - W. 7 x D. 7 x H. 13 cm	7 540 001 + OD
Desk pad holder + bloc of paper - W. 11 x D. 11 x H. 4 cm	7 540 006 + OD
Magazine holder - W. 7.1 x D. 25 x H. 30.6 cm	7 540 007 + OD
Paperclip dispenser - W. 9.5 x D. 9.5 x H. 5.5 cm	7 540 008 + OD
Desk mat - W. 60 x D. 45 cm	7 540 005 + OD

DRAWERS & HANGING STORAGE TRAYS



Metal drawer - Drawer mounted on plastic runners. Fitted to the underside of worktops using wood screws. Includes an ABS pen tray. W.37 x D. 31.5 x H. 67 cm. Not suited to tops depth 70 cm.	1 617 019 + fin.
--	------------------



Rotatable ABS storage tray - Semi-circular rotatable storage tray made from ABS. Fitted to the underside of worktops using wood screws. W. 34.5 x D. 20.5 x H. 3.5 cm.	6 497 014 + fin.
---	------------------

CLOCKS

Quartz clocks. Batteries not included. Complies with current European CE and ROHS standards.



Pep's - Integrated thermometer and hygrometer. Aluminium grey ABS dial Ø 30 cm.	7 446 008 + OI
--	----------------



Horus - Oversize self-adjusting clock (responsive to radio frequency updates). Aluminium grey dial Ø 38 cm.	7 446 003 + OI
--	----------------

FINISHES

2 choices of colour for AXIANE



ZA
Aluminium grey



ZR
Violet

3 choices of finish for METAL DRAWERS



SO
White



SA
Aluminium grey



SG
Black

3 choices of finish for ABS STORAGE TRAY



OG
White



OI
Aluminium grey



OF
Black

FROM STOCK

FOOTREST



Arsena W. 45 x D. 35.3 cm
Made from black ABS. Adjustable in height (2 settings) and tilt (6 angles).
Height at front: min. 6 cm – max. 15 cm / at rear: min. 9 cm – max. 14 cm.

Ref.	P.E.T.	Price excl. tax
7 419 050 + OF		-



Marysa W. 37 x D. 25 cm
Made from black ABS. Non-slip rubber mat. Adjustable in height (4 settings) and tilt (4 angles).
Height at front: min. 3 cm – max. 6.5 cm / at rear: min. 8 cm – max. 12.5 cm.

7 419 051 + OF		-
----------------	--	---

METAL WASTE BINS

Waste bins made from steel or extruded metal, in an epoxy lacquered finish.



Waste bin - extruded metal - 20 L - H. 35 x Ø 29.5 cm
Finish: Aluminium grey ZA, Black ZD

7 438 020 + fin.		-
------------------	--	---



Cylindrical waste bin – non-perforated steel - 12 L - H. 30.5 x Ø 24 cm
Finish: Aluminium grey ZA, Black ZD

7 438 022 + fin.		-
------------------	--	---



Cylindrical waste bin – perforated steel - 12 L - H. 30.5 x Ø 24 cm
Finish: Aluminium grey ZA, Black ZD and White SO

7 438 021 + fin.		-
------------------	--	---

WASTE SORTING BIN



Stackable waste sorting compartments with handles. Polypropylene in Aluminium OI finish or Black OF recycled ABS (+ fin.).



① **Waste bin** - 26 L - H. 34.5 x W. 24.4 x D. 33 cm. For A4 size documents stored flat.

	Black	Aluminium grey
7 455 002 + fin.		

Options - Attaches to the inside or outside of the waste paper bin.

② **Waste bins** - 5 L - H. 18.2 x W. 17.3 x D. 23.6 cm

7 455 003 + fin.		
------------------	--	--

③ **Waste bins** - 9 L - H. 34.6 x W. 17.3 x D. 23.6 cm

7 455 004 + fin.		
------------------	--	--

④ **Lid for 5 and 9 litre bins**

7 455 001 + fin.		
------------------	--	--

FLOOR MATS FOR OFFICE CHAIRS

Made from 2 mm thick polycarbonate. For hard floors and high pile carpets. Transparent aspect.



For hard floors

W. 120 x D. 90 cm

7 539 005 + PV	
----------------	--

W. 150 x D. 120 cm

7 539 007 + PV	
----------------	--

For soft floors

W. 120 x D. 90 cm

7 539 006 + PV	
----------------	--

W. 150 x D. 120 cm

7 539 008 + PV	
----------------	--

FINISHES

3 choices of finish for METAL WASTE BINS



SO*
White



ZA
Aluminium
grey



ZD
Black

2 choices of finish for WASTE SORTING BIN



OI
Aluminium
grey



OF
Black

FROM STOCK

* Only available for the cylindrical perforated steel waste bin - 12 L.

WOTAN



SEQUOIA



BASTY



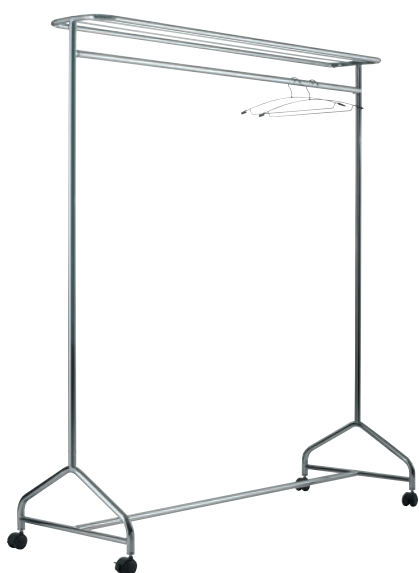
ALOES



CAFE



MOBILE CLOTHES RAIL



SET OF 12 COAT HANGERS



MAGNETIC COAT PEGS

COROLLE



ALOÈS




PRICES

Price excl. taxes: **From stock** **On request**


	Ref.	
WOTAN Steel structure with a grey varnish finish. 8 coat pegs, 4 bag hooks and 4 umbrella rings in a matching finish. In a gloss Black OF or Translucent blue OE finish (+ col.). H. 178 cm - Base Ø 34 cm	7 416 001 + fin.	
SEQUOIA Steel structure with a black varnish finish. 8 coat pegs and 4 umbrella rings. In a black finish. H. 174 cm - Base Ø 60 cm	7 415 001 + ZD	
BASTY Chromed steel structure 8 coat pegs, 4 bag hooks and 4 umbrella rings in a matching finish. In a black finish. H. 180 cm - Base Ø 32 cm	7 414 001 + SQ	
ALOES Steel structure. 6 oblong varnished beech coat pegs and integrated umbrella stand. Aluminium finish / varnished Beech ZA coat pegs or violet finish / White ZR coat pegs. H. 170 cm - Base Ø 36 cm H. 170 cm - Base Ø 36 cm	7 367 004 + ZA 7 367 004 + ZR	
CAFE Circular section Ø 42 mm wood stem. Rotating head. Easy tool and screw-free assembly. Light wood finish. H. 176 cm - Base 54 x 54 cm	7 414 002 + MB	
MOBILE CLOTHES RAIL Polypropylene casters, 2 of which are lockable. Steel structure in a chrome finish. Supplied flat-packed. Mobile clothes rail with hat shelf H.169 x W. 148 x D. 54 cm	7 417 002 + SQ	
SET OF 12 COAT HANGERS Made from black polypropylene	7 417 004 + OF	
MAGNETIC COAT PEGS Metal structure. Back covered with a protective yet gripping material. Attaches to any metal structure. Max. load 9 to 11 kg. COROLLE - ABS Black / Aluminium H. 12.6 x W. 8 cm ALOËS - Aluminium / varnished Beech H.12.6 x W. 8 cm	7 552 001 + OI 7 367 002 + ZA	

FINISHES

2 choices of finish for WOTAN




OE
Translucent blue

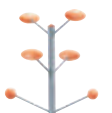


OF
Black

2 choices of finish for ALOËS



ZR
Violet with white pegs



ZA
Varnished beech

FROM STOCK

PRICES

Price excl. taxes: **From stock** **On request**

EASELS

**Static height-adjustable easel** (adjusts from 110 to 195 cm).

Use with marker pens as a dry wipe board or with paper flipchart pad. Pen tray included. H. 104 x W. 68 cm. Magnetic lacquered steel back panel.

Ref.

6 386 117

Mobile fixed height easel (on 5 self-braking castors), non-adjustable H. 186 cm.

Magnetic lacquered steel back panel.

6 386 118

WHITEBOARDS



Anodized aluminium frame. Can be affixed to a support horizontally or vertically (includes mounting kit).

Lacquered - Steel whiteboard with lacquered finish. Magnetic dry wipe surface. Pen tray included.

60 x 90 cm

6 386 110

90 x 120 cm

6 386 111

Enamelled - Steel whiteboard with enamelled finish. Magnetic dry wipe surface. Pen tray included.

60 x 90 cm

6 386 096

90 x 120 cm

6 386 093

120 x 180 cm

6 386 095

**Cork** - Natural cork panel surface, 12 mm thick.

60 x 90 cm

6 386 082

90 x 120 cm

6 386 083

**Still**

Lacquered steel whiteboard. Magnetic dry wipe surface.

Can be affixed to a support horizontally or vertically. Pen tray included. Dimensions : 75 x 115 cm.

6 386 109

OPTIONS

**Accessories kit**

4 marker pens (black, blue, green and red) + 6 magnets + 1 magnetic brush + 125 ml cleaning product.

6 386 116

**Paper block refill**

5 refill pads of 50 white paper sheets each. Format 100 x 65 cm.

6 386 114

NAME PLATES

Anodised aluminium structure with non-reflective transparent acrylic front panel. Fixing elements included (screws and adhesive).

Ref.



Set of 5 door plates* - H. 5.5 x W. 8.5 cm

6 544 006



A4 plate* - H. 29.7 x W. 21 cm

6 544 008



A4 clip-on frame - H. 29.7 x W. 21 cm

6 544 009

* Frame can be customised by slotting in trim bands that come in 6 different colours.

MAGAZINE DISPLAY

Metal stand in an Aluminium grey finish and ABS shelves.



6 compartment magazine stand - H. 93 x W. 34 x D. 50 cm

7 543 001 + ZA

WINDOW BOARDS

Indoor 9 A4 window boards, with lockable swing door (2 keys supplied). Acrylic door 4 mm thick. Anodized aluminium frame. Secured using screws (screws included). H. 98 x W. 72 x THK 3.5 cm



Magnetic lacquered back panel

6 542 010

Cork back panel

6 542 012

Indoor 12 A4 window boards, with lockable sliding door (2 keys supplied). Toughened safety glass 5 mm thick. Anodized aluminium frame. Secured using screws (screws included). H. 92 x W. 97 x THK 7.5 cm



Magnetic lacquered back panel

6 542 011

Cork back panel

6 542 013

GETTING CONNECTED, A FUNCTIONAL AND AESTHETIC IMPERATIVE

In an era of ultra-connectedness and mobility, integrating power and cable management solutions has become a strategic imperative, right from the initial design stage of office furniture. This year, EOL is offering an extended selection of ingenious and discreet power management solutions. Their function is to help organise and secure the workspace (vertical and horizontal cable management), as well as to ensure immediate access to power points (top access housing, air charge, etc.). With EOL, you are guaranteed to find the perfect connectivity solution for all your shared or individual needs.

Cable ports

Top access housings 274

Socket outlets - Cable management 276

Modesty panels 278

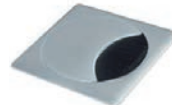
PLAIN CABLE PORTS



"EOL" design cable port
Made from injection moulded ABS in a White OG, Aluminium grey OI, Graphite grey OK finish (+fin.).



Square cable port
Injection moulded ABS in Aluminium grey OI



Square cable port with brush
Zamac alloy port in a matt bronze SQ or matt black OF finish (+fin.).

SOCKET PORTS



Socket ports for direct connectivity
Made from ABS in Black OF finish.



Socket ports for direct connectivity with retractable cover
Made from ABS in a White OG or Black OF finish (+ fin.).



Socket port with wireless induction battery charger
Made from ABS in a White OG or Black OF finish (+ fin.).
Aluminium outer ring

TOP ACCESS HOUSINGS - WITH OR WITHOUT SOCKET FEED



Top access housing without socket feed
Injection moulded ABS in White OG or Aluminium grey OI (+fin.).



Soft closing top access housing without socket feed
Metal casing in White SO, Aluminium grey OI or Black ZN (+fin.).



Soft closing top access housing with socket feed
Metal casing in White SO, Aluminium grey OI (+fin.).

PRICES

Price excl. taxes: From stock On request

PLAIN CABLE PORTS (Ø 80 MM OPENING)

« eol. » Cable port

Port composed of an outer ring and a snap-in "eol" design Ø 60 mm cap fitted to the worktop.

6 478 012 + fin.

Square cable port

Dimensions: 95 x 95 mm. Comprises 2 removable parts to facilitate routing of wires and cables.

6 478 008 + 01

Square cable port with brush

Dimensions: 89.5 x 89.5 mm. Rotates 180° to facilitate routing of wires and cables. Integrated black brush.

6 478 101 + fin.

POWERED SOCKET PORTS (Ø 80 MM OPENING)

Socket ports for direct connectivity

Insert into pre-cut openings on the worktops, foreseen for cable ports Ø 80 mm. Depending on the model, housings can be fitted with a power feed (PC), a USB 5V charging point, an RJ45 socket port.

Supplied with mains power cable UK 1.5 m long (UK plug).

Not compatible with the ELOISE central stem tables.

Socket port 1 PC

6 478 131 0F

Socket port 1 PC + 1 USB 5V + 1 RJ45

6 478 133 0F

Socket ports for direct connectivity with retractable cover

Insert into pre-cut openings on the worktops, foreseen for cable ports Ø 80 mm. Depending on the model, housings can be fitted with a power feed (PC), a USB 5V charging point, an RJ45 socket port, an HDMI socket. Supplied with mains power cable UK 1.5 m long (UK plug) and RJ45.

Socket port 1 PC + 1 USB 5V + 1 RJ45

6 478 141 + fin.

Socket port 1 PC + 1 RJ45 + 1 HDMI - White

6 478 143 0G

Socket port 1 PC + 1 RJ45 + 1 HDMI - Black

6 478 143 0F

Socket port with wireless induction battery charger

Insert into pre-cut openings on the worktops, foreseen for cable ports Ø 80 mm. Cable port featuring a wireless electromagnetic induction charger for latest generation smartphones. Smartphones needs to be enabled with Qi inductive charging receiver technology (integrated or in the casing) Supplied with mains power cable UK 1.5 m long (UK plug).

White

6 478 145 0G

Black

6 478 145 0F

TOP ACCESS HOUSINGS

Top access ABS housings, without socket feed (for worktops 19 mm thick)

Fitted to worktops featuring pre-cut openings for top access housing modules. Dimensions: 260 x 116 mm.

Allows cables to be fed through from desk tops to the structure.

6 478 079 + fin.

Top access soft closing housing, without socket feed (for worktops 25 mm to 38 mm thick)

Fitted to worktops featuring pre-cut openings for top access housing modules. Dimensions: 240 x 120 mm. Allows cables to be fed through from desk tops to the structure.

Soft closing mechanism. Fitted with grey brushes.

Metal housing in White SO or Black ZN

6 478 113 + SO / ZN

Metal housing in Aluminium OI

6 478 113 + OI

Top access soft closing housing, with socket feed (for worktops 25 mm to 38 mm thick)

Fitted to worktops featuring pre-cut openings for top access housing modules. Dimensions: 240 x 120 mm. Supplied with mains power cable UK 2 m long (UK plug) and RJ45.

Top access with 2 PC + 2 RJ45 + 2 USB - White SO

6 478 114 + SO

Top access with 2 PC + 2 RJ45 + 2 USB - Aluminium OI

6 478 114 + OI

Top access with 1 PC + 2 USB + 2 RJ45 + 1 HDMI - White SO

6 478 148 + SO

Top access with 1 PC + 2 USB + 2 RJ45 + 1 HDMI - Aluminium OI

6 478 148 + OI

SOCKET OUTLETS FOR WORKTOPS



new

Retractable socket outlets
Injection moulded ABS in Black and Aluminium OF.



new

Outlet to be affixed to worktops
Injection moulded ABS in Black and Aluminium OF.

SOCKET OUTLET KITS



new

Socket outlet
Injection moulded ABS in Black OF.



new

Socket feeds
Injection moulded ABS in Black OF.



new

Feeder cables.
Injection moulded ABS in Black OF.

HORIZONTAL CABLE MANAGEMENT



Horizontal cable trough for individual desks
Available in a choice of 7 metal finishes (+ fin.)



◀ FROM STOCK ▶ ◀ .5% ▶ ON REQUEST ▶



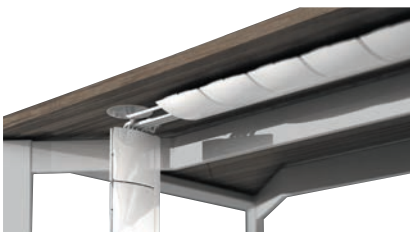
Twin compartment cable trough for shared workstations
Available in a choice of 7 metal finishes (+ fin.)



◀ FROM STOCK ▶ ◀ .5% ▶ ON REQUEST ▶



Cable troughs for fitting to worktop
Metal in an Aluminium grey SB finish.



Clip-on cable trough with retractable flaps
Injection moulded ABS in White OG, Aluminium grey OI or Black OF (+fin.).



Cable brackets
ABS in Black OF or White OG (+fin.)



new

Wire basket
Metal in an Aluminium grey SB finish.

ON REQUEST: allow 4 to 6 weeks

PRICES

Price excl. taxes: **From stock** **On request**

SOCKET OUTLETS FOR WORKTOPS

Retractable socket outlets for cable ports - Insert into pre-cut openings on the worktops for cable ports Ø 80 mm. Supplied with mains power cable EUR 2 m long (EUR plug) and RJ45. Not compatible with the central stem leg structure of circular tables.

	Ref.
Socket ports 1 PC + 1 RJ45 + 2 USB	6 478 151 + OF
Socket ports 1 PC + 1 RJ45 + 1 HDMI	6 478 154 + OF

Outlet to be affixed to worktops - Fitted to worktops using fixing brackets (spacing 0 - 38 mm). Supplied with mains power cable EUR 2 m long and RJ45.

Socket ports 2 PC + 2 RJ45 + 2 USB	6 478 157 + OF
Socket ports 2 PC + 2 RJ45 + 2 USB + 1 HDMI	6 478 160 + OF

SOCKET OUTLET KITS (UK plug)

Socket outlets - Fitted to the cable troughs - Accessed through top access housings, recesses in the worktops or sliding worktops. Power cables and connectors to be ordered separately.

Socket ports 3 PC	6 478 171 + OF
Socket ports 3 PC + 2 RJ45	6 478 174 + OF
Socket ports 2 PC + 2 RJ45 + 1 HDMI	6 478 177 + OF

Electrical connectors - Designed for linking socket outlets

1 mains inlet, 1 outlet	6 478 179 + OF
1 mains inlet, 2 outlets	6 478 180 + OF

Power cables - Designed for linking socket outlets or connecting to a mains power supply

Connector cable between 2 socket ports - 2 m	6 478 182 + OF
Power cable PC 3 m	6 478 185 + OF

HORIZONTAL CABLE MANAGEMENT

Cable troughs for individual desks - Cable troughs are secured directly to the structural crossbeam on either the user or visitor side, or to the underside of the worktop using wood screws. Not compatible with glass worktops. Facilitates horizontal storage of trailing sockets and cables. Worktops with pre-cut openings for top access housings already include a cable trough. For desks with structural pedestals, add a cable trough for worktops measuring 40 cm less. E.g. for a worktop W. 160 cm, add a cable trough for worktops W. 120 cm.

For individual workstations

W. 120 cm - Cable trough W. 90 cm	1 531 001 + fin.
W. 140 cm - Cable trough W. 110 cm	1 531 002 + fin.
W. 160 cm - Cable trough W. 130 cm	1 531 003 + fin.
W. 180/200 cm - Cable trough W. 150 cm	1 531 004 + fin.

Twin compartment cable trough for shared workstations - For shared structure comprising 2 individual desks or shared workstation with fixed worktops. Facilitates the storage and vertical routing of cables and trailing sockets. Worktops with pre-cut openings for top access housings already include a cable trough.

For workstations

W. 120 cm - Cable trough W. 90 cm	1 067 391 + fin.
W. 140 cm - Cable trough W. 110 cm	1 067 388 + fin.
W. 160 cm - Cable trough W. 130 cm	1 067 389 + fin.
W. 180/200 cm - Cable trough W. 150 cm	1 067 390 + fin.

Cable troughs for fitting to worktop - Single centred anchor point. Adjustable to three predetermined heights (10.5/13.5/16.5 cm) lock in position without the need for tools. Two openings in the back allow cables to pass through. Suitable for all types of tables. Dimensions: D. 10 x H. 10 cm.

W. 105 cm	6 478 065 + SB
W. 145 cm	6 478 066 + SB

Clip-on cable channel with flaps - Attaches to the underside of the worktop using wood screws (supplied) – W. 65.7 cm. Cabling is directly accessible along the length of the channel via 7 retractable flaps concealing cable clips.

Horizontal clip-on cable channel	6 478 098 + fin.
----------------------------------	------------------

Cable routing brackets - Attach to the underside of the worktop using wood screws (supplied) – W. 17 cm. Feature 5 compartments to facilitate segregated cable routing.

Cable routing brackets (set of 2)	6 478 048 + OF
-----------------------------------	----------------

Wire basket - Attaches to the underside of the desktop using wood screws.

Wire basket W. 49 cm	6 478 190 + SB
Wire basket W. 79 cm	6 478 191 + SB

VERTICAL CABLE MANAGEMENT



Multi-purpose cable holders
ABS in Black OF (+ fin.)



Cable column
Metal in White SO, Aluminium grey SA or Graphite grey SC (+fin.)



Cable column with retractable flaps
ABS in White SO, Aluminium grey SB or Black SG (+ fin.)



Clip-on cable column
Metal casing in White SO, Aluminium grey SA (+fin.).



Magnetic cable holder
Metal in White SO, Aluminium grey SA or Graphite grey SC (+fin.)

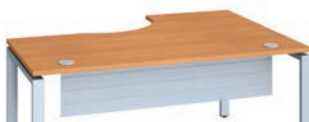


Extendable vertical cable channel
Made from ABS in White OG, Aluminium grey OI or Black OF (+fin.)

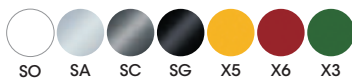


Flexible zipped cable sheath
Mesh in Grey IM or Black IZ (+ fin.)

MODESTY PANELS



Modesty panels
H. 28 cm - Available in a choice of 7 metal finishes (+ fin.) In matching finish to legs.



ON REQUEST: allow 4 to 6 weeks depending on selection

PRICES

Price excl. taxes:

From stock

On request

VERTICAL CABLE MANAGEMENT

	Ref.	
Multi-purpose cable holders		
W. 60 x 7 cm - Attach to any surface and in any position, using double-sided tape (supplied). Feature 4 compartments to facilitate segregated cable routing.		
Cable holder	6 478 003 + 0F	
Cable column Ø 70 mm		
Attach to the underside of the desktop using wood screws (supplied) - Cables are routed through the inside of the column. Circular section tubular steel vertical cable column.		
Cable column	6 478 078 + fin.	
Cable column with retractable flaps H. 72 x W.11 cm		
Attaches to the underside of the worktop using wood screws (supplied). Cabling is directly accessible along the length of the channel via 7 retractable flaps concealing cable clips.		
Cable column with retractable flaps	6 478 097 + fin.	
Clip-on cable column		
Clips onto the rectangular metal leg structure once cables are installed. Facilitates routing of cables down from the worktop.		
Clip-on cable column	1 067 737 + fin.	
Magnetic cable holder		
Metal cable holder for fixed leg or height-adjustable leg from 71 cm. Attaches using magnets.		
Magnetic cable holder	1 678 045 + fin.	
Extendable vertical cable channel		
Attaches to the underside of the worktop using wood screws (supplied). Extendable up to 130 cm.		
Extendable vertical cable channel	6 478 123 + fin.	
Flexible zipped cable sheath		
Attaches to the underside of the desktop using wood screws.		
H. 75 cm	6 478 164 + fin.	
H. 110 cm	6 478 165 + fin.	
H. 150 cm	6 478 166 + fin.	

MODESTY PANELS

Metal modesty panels

Attach to models incorporating a crossbeam structure. In matching finish to legs. Attach to the underside of the worktop using wood screws. For desks with structural pedestals, add a modesty panel for worktops measuring 40 cm less. E.g. for a worktop W. 160 cm, add a modesty panel for worktops W. 120 cm.

For workstations

W. 120 cm - Modesty panel W. 90 cm	1 800 194 + fin.	
W. 140 cm - Modesty panel W. 110 cm	1 800 195 + fin.	
W. 160 cm - Modesty panel W. 130 cm	1 800 196 + fin.	
W. 180/200 cm - Modesty panel W. 150 cm	1 800 197 + fin.	